

INFO PACK

Facilitation skills for inclusive educational activities



Introduction

When & Where

The "Facilitation skills for inclusive educational activities" training course will take place from the **25th of January** (arrival day) until the **2nd of February** (departure day) in **Arad, Romania**.

At the following link you can also find the online application form, which each participant who will participate in the training course will need to fill in:
<https://forms.gle/qh1qqfSsz4uk8fhq7>

01

Content of TC

This training course is dedicated to youth workers, trainers and facilitators that are involved in learning activities with young people facing various types of disabilities.

The novelty of this training is connected with the in-depth approach to learning processes, delivery and evaluation of learning results. During the training we will also focus on learners' needs and proper tools to address them in a personalized way. At the same time, we will focus on the personal and professional development of us as trainers/ facilitators of learning.

02

The Organisation

Ofensiva Tinerilor Association was founded in 2004, promoting European values being an integral part of its purpose.

Our mission is to provide young people with accessible educational opportunities to help them reach their full potential. We do this by educating students through non-formal activities on social issues such as diversity, gender equality, inclusion, anti-bullying and non-discrimination.

03

INFO PACK

Facilitation skills for inclusive educational activities



Introduction

Moreover, we offer youth workers and teachers the opportunity to personally experience the programs we offer and learn about different working practices in peer-to-peer education.

Every year, we organize both Thematic Awareness Trainings (to familiarize with our methodologies) and Train-the-Trainer activities (to develop facilitation skills) on the topics covered by our programs. We aim for participants to use the skills they have acquired locally, in the communities where they usually work, and to report on their achievements and the challenges they have encountered.

What we offer

04

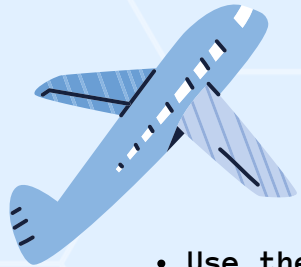
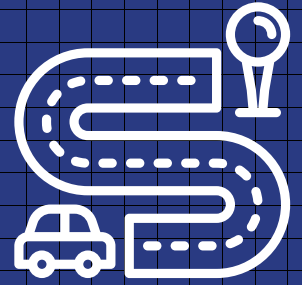
05

Good to know

- Participants should be involved in youth work, being part of the staff or volunteers of the sending organization.
- All participants who would like to join this training course, would need to have a sending organization, who will sign a short mandate form with us before sending the participant, in order to formalize our partnership.
- Participants will be selected according to their motivation to participate in the training and the willingness to be part of the learning journey.
- We will be announcing the participants that will be selected to be part of the training, who then will have to announce their sending organizations of the fact that they were selected to participate in the training. After this, we will proceed with signing the official partnership/mandate form.

Logistical aspects >

LOGISTICAL ASPECTS



Transportation

For arrival to Arad, Romania, participants can:



- Use the airport of Budapest 250 km away from Arad; a special shuttle bus or direct train can be used to arrive to Arad. For shuttle buses we recommend Simplicity company; below you have their contact details:
 - phone: 0040744222299
 - e-mail address: office@simplicity.ro
 - website: <https://www.simplicity.ro/>
 - The prices chart for Arad-Budapest / Budapest airport-Arad:

TIP TRANSFER	TARIF (price)	LEI	EURO
SHUTTLE	adult	175	35
	copil (0-12 ani) (child)	85	17



- Use the airport of Timisoara 50 km away from Arad; from Timișoara airport to Arad you can use public transportation (train). The train stations you need are: Timișoara Nord & Arad. From Arad train station you can take tram no. 3 or no. 6. Tickets for the train are available in the station, and for the tram are available by card in the trams (0,81€). Below you have the website with the train schedules:

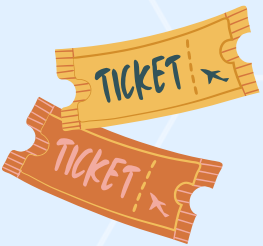
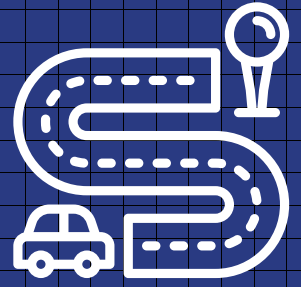
<https://mersultrenurilor.infofer.ro/en-GB/Itineraries>

- Use the train; there are direct routes from Budapest several times each day, from the Keleti train station. The journey takes around 4-5 hours to Arad; here you can find the website for purchasing the tickets online and, on the next page, there is also an example of schedule:

<https://bileteinternationale.cfrcalatori.ro/en/booking/search>



LOGISTICAL ASPECTS



SEARCH OUTWARD JOURNEY

Budapest-Keleti - Arad

20.10.2022 15:35 5 Changes 20 Minutes

CHANGE SEARCH

SEARCH EARLIER

Departure From Budapest-Keleti 20.10.22 17:10	0 - 8 04:25	Arrival To Arad 20.10.22 22:35
DETAILS	MAP	Not available online
Departure From Budapest-Keleti 20.10.22 19:10	0 - 8 04:40	Arrival To Arad 20.10.22 00:50
DETAILS	MAP	RETURN JOURNEY
Departure From Budapest-Keleti 20.10.22 22:45	0 - 8 04:43	Arrival To Arad 21.10.22 04:28
DETAILS	MAP	RETURN JOURNEY
Departure From Budapest-Keleti 20.10.22 22:45	0 - 8 04:44	Arrival To Arad 21.10.22 04:29
DETAILS	MAP	RETURN JOURNEY



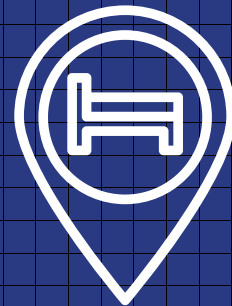
- Use the car; in case you do so please keep your pay toll receipt (we would need those to show your route), as well as a Google map print showing your route of both way travels.
- Use the bus; there are several private bus companies on the Internet that are going around Europe through different cities. Here is a website where you can find available buses to/from Romania: <https://www.checkmybus.com/romania>

You can, of course, combine all the means of transportations from above.



Accommodation >

LOGISTICAL ASPECTS



Accommodation

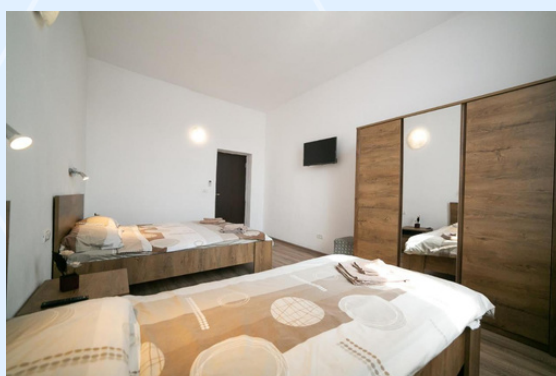
You will be staying at Boul Roșu Residence

Boul Roșu Residence is located in the city center in an ideal position for a walking tour of the city and to reach the training room / restaurant. For taking the tram (if/when you want), you can just go out of the premises of the venue and you will find the tram station right in front of the accommodation.

Please let us know the approximate time of your arrival, as there is no 24/7 reception and we will have to let them know when you arrive so they will be there, give you the key and lead you to your rooms.

The address of the accommodation is: Tribunal Dobra Street, no. 22, ARAD 310101 (Zip code), Romania.

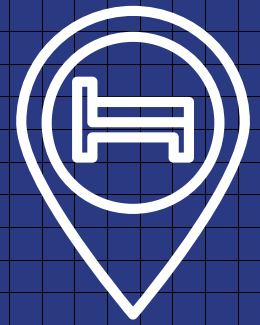
Below are some photos with the rooms and here is their website if you want to take a closer look: <https://www.boulrosu.com/>



More >



LOGISTICAL ASPECTS

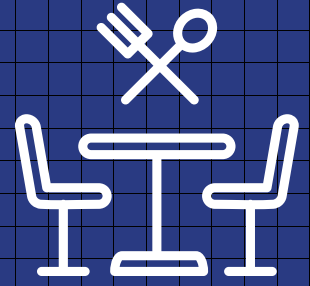


Participants will be hosted in rooms of 2 and 3 people, according to same gender).

Wi-fi will be provided at the accommodation and training room. Please keep in mind that you will be a big group of participants, in case Internet is slow or not working at times it is due to the fact that most probably all of you will try to connect at the same time to the same wireless router. Patience and understanding are required :)



LOGISTICAL ASPECTS



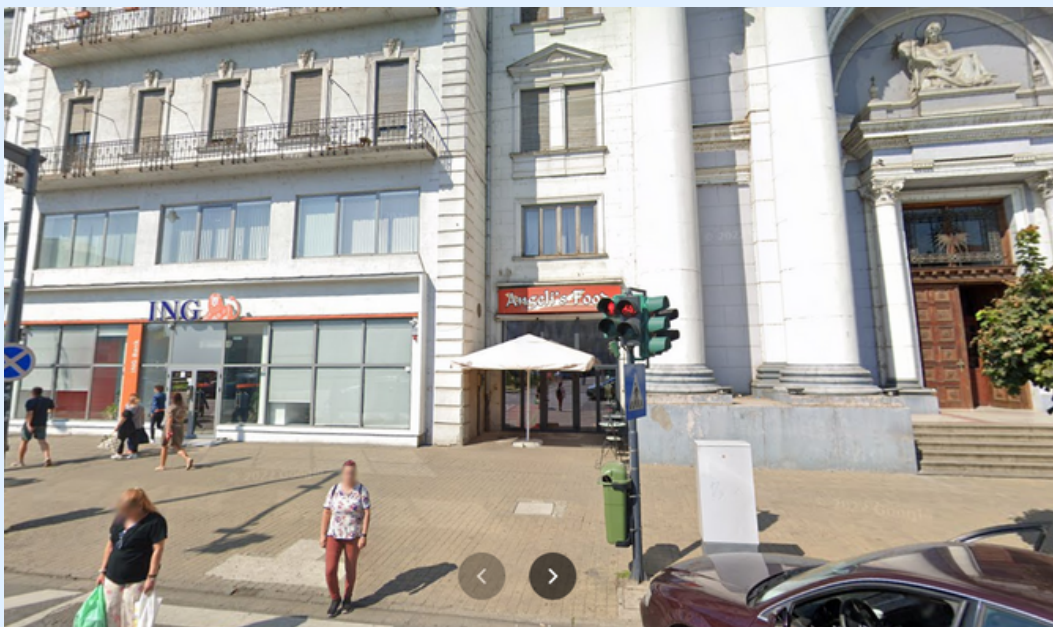
Food



We will provide everyone with 3 meals and 2 coffee breaks/day. Participants will be asked for special dietary needs in the application form. Please make sure to fill in the specific section, as it will help us and the restaurant staff prepare and offer the best service possible.

In case you will not mention your special dietary need in the application form, we will not be able to guarantee that it will be taken into consideration by the restaurant. Please keep in mind that here we refer to allergies, intolerance to any food groups as well as not eating specific types of food out of religious reasons.

Below you can find a picture of the restaurant (*Angeli's Food*) and a map which includes the 3 venues we will use over the week (accommodation, training room and restaurant).





Training room >

LOGISTICAL ASPECTS



Training room



The Training Course will take place at the headquarters of the Association of the Blind in Arad, located on Unirii street, no. 10. Bonus: the hosts are very friendly and polite!! :)

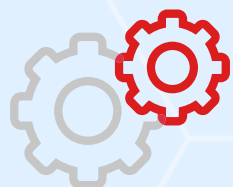
The building is accessible for every type of disability, has private bathrooms, a kitchen, hallways, offices and a conference room, where we will have our training. All necessary materials/ resources will be supplied by our organization.

Below you will find a picture of the building (street view) that we have to enter, and next a picture of the actual building (located inside the yard) where we will conduct our activities.



Street view of the building we have to enter ^

More >



LOGISTICAL ASPECTS



The building from the yard ^

Participants are advised to have a European Insurance card with them or buy travel insurance before departure. This cost will **not** be reimbursed to the participants.

About the city

"Arad – a city with personality"

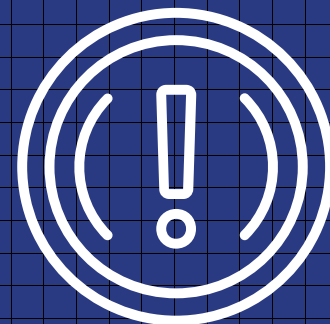
A few places you can explore during your stay in Arad :)

- <http://www.aradcityguide.ro/en/>
- <https://www.youtube.com/watch?v=XzdyRHDilV0>

More >



IMPORTANT ASPECTS



Reimbursement

Each participant will receive a reimbursement form; participants' travel costs will be reimbursed according to the funding rules of the ERASMUS+ program.

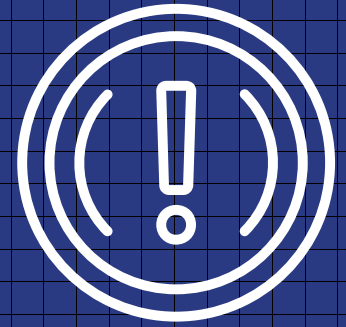
Reimbursement will be done by bank transfer to each participant right after our association will receive all original both ways travel documents from all participants (round trip boarding passes, flight itinerary, bus or train tickets).

Based on the distance bands (that can be found in the Erasmus+ Programme Guide), we will reimburse the travel costs as according to the table below:

Budget category	Eligible costs and applicable rules	Amount		
		Travel distance	Standard travel	Green travel
Travel support	Contribution to the travel costs of participants, from their place of origin to the venue of the activity and return. Financing mechanism: contribution to unit costs. Rule of allocation: based on the travel distance per participant. The applicant must indicate the distance between the place of origin and the venue of the activity ⁴⁷ by using the distance calculator supported by the European Commission ⁴⁸ .	10 – 99 km	23 EUR	
		100 – 499 km	180 EUR	210 EUR
		500 – 1999 km	275 EUR	320 EUR
		2000 – 2999 km	360 EUR	410 EUR
		3000 – 3999 km	530 EUR	610 EUR
		4000 – 7999 km	820 EUR	
		8000 km or more	1500 EUR	

[More >](#)

IMPORTANT ASPECTS



Do not forget to pack:



- ☒ Your good mood! :)
- ☒ Some warm winter clothing – winter can be quite cold in Arad;
- ☒ Music you like, we could use it during the breaks and working sessions;
- ☒ In case you use any kind of medication please make sure you would have enough for your stay;
- ☒ Laptop/photo camera – if you wish;
- ☒ Everything you need for your own personal comfort and for your evenings entertainment: musical instruments, games, sports shoes, and clothes, etc.;
- ☒ Music you like – we could use it during the breaks and working sessions;
- ☒ Optional: Some traditional sweets or drinks you can share with other participants during free evenings.



The end.