

Erasmus+



ABOUT THE PROJECT

The training course "Lifelong playing" is organized by Cirkus La Bulle/ Association CIK in Brežice, Slovenia during the period of 24.10. – 31.10.2022, including 25 participants and 3 team members from 11 countries (Slovenia, Czech, Finland, Latvia, North Macedonia, Romania, Belgium, Italy, Cyprus, Portugal, Poland).

The main goal of training course is to presents participants with different types of games which they can use as a tool in their youth work.

We have been playing since we were children. Through the play we get to know ourselves, the world around us and we learn. Therefore, play is one of the basic forms of education and relaxation, and at the same time it can serve as an effective pedagogical tool. Social games include those games that, instead of competition, focus on social relations between people and raise the level of self-awareness and social sensibility through the element of conversation about what happened to the participants during the game.

The main goal of our project is to teach the participants various social games (games for getting to know each other, games for trust, cooperative games...) and show them how to use them in the context of non-formal education and youth work. TC is created so that the participants are actively involved in exploring, playing and discussing about them as well as methods used. It is expected from the participants to be willing to practice and be curious about exploring all about games as tools for learning. The program will be mostly held indoor, in some parts we will also use outdoor spaces.

At the end of the training course, the participants will be equipped with knowledge how to choose, prepare and implement social games with groups. After the project, their task will be to lead at least one workshop including social games for youngsters in their country.

PARTICIPATING COUNTRIES & NO. OF PARTICIPANTS

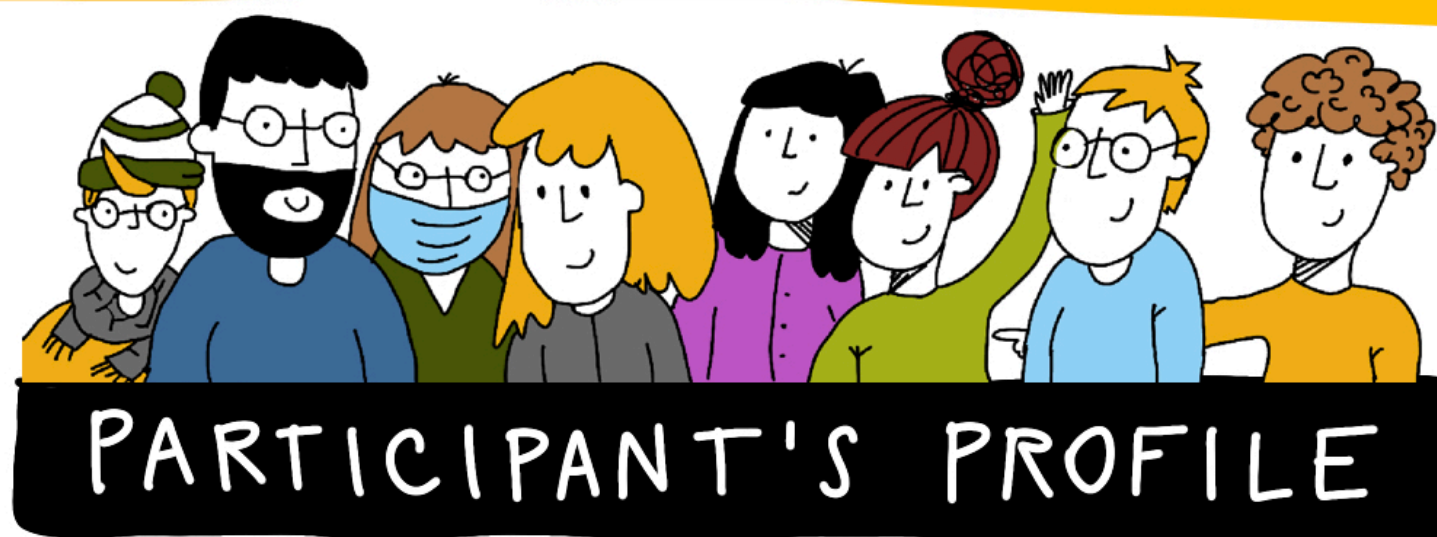
Slovenia	2
Czech	2
Finland	3
Latvia	2
North Macedonia	2

Romania	3
Belgium	2
Italy	3
Cyprus	2
Poland	2
Portugal	2



Erasmus+





The training course will take place in **Brežice, Slovenia, from 24th to 31st of October 2022** and it will bring together a group of 25 young people from 11 partner countries. The project is targeting youth workers, trainers, coordinators and facilitators from all fields of non-formal education who are motivated to learn about social games as a tool of inclusion in youth work.

We are looking for youth workers/youth leaders who are over the age of 18 with a good level of English, who will be willing and committed to participate actively in ALL sessions (about 8 hours a day):

- All participants **HAVE TO BE OVER 18 YEARS OLD** and **HAVE RESIDENCY IN THE SENDING COUNTRY**.
- There should be a gender balance; half of the participants should be male and half should be female.
- All participants should speak and understand English.
- Participants should already be involved in youth work or be motivated to get involved with it.
- Participants should be willing to share their knowledge with their colleagues once they return home.
- Participants should be interested in making follow up international projects.

WHAT WE OFFER

Thanks to the financial support of the Council of Europe through the Erasmus+ Program, we offer the following conditions:

- Food and accommodation during the training course will be provided
- Travel costs will be reimbursed up to an agreed limit depending on the sending country:

Slovenia: 23€, Czech: 180€ (Green travel: 210€), North Macedonia: 275€ (Green travel: 320€), Finland, Latvia, Romania, Belgium, Italy, Cyprus, Poland, Portugal: 275€..

The countries from the second and third place of the above description are relatively close to the venue of the training course. For this reason, they are granted a travel budget called green travel meaning that if the participants use sustainable means of transportation such as train, buses or carpooling, they can be refunded up to 210 EUR instead of 180 EUR for second group and 320 EUR instead of 275 EUR for the third group if they use other mean of transport with a high carbon footprint.

Travel costs will be reimbursed to you / your organization **AFTER** the project and it might take some time (up to two months). Also, when buying the tickets, bear in mind that **there is a fixed maximum amount reimbursable for your individual trip costs**. The sum, set by the European distance calculator, is for return tickets and covers the travel costs from the participants' home to Brežice. Participants themselves will cover travel costs exceeding the maximum reimbursable amount.

IMPORTANT: In order to reimburse you, **we need all original invoices, tickets and boarding passes** you will use during your trip. **WITHOUT THESE DOCUMENTS WE WON'T BE ABLE TO REIMBURSE YOU.** On all travel documents has to be written your name and surname, date of travel, from where to where was the journey, and the price. Once you book your trip, **LATEST TILL 24.9.2022** please send your arrival and departure time to cirkuslabulple@gmail.com

ARRIVAL & DEPARTURE

The arrival day is 24th of October and the departure day is 31st of October. All participants have to arrive on the arrival day to the venue and the have to leave on departure day (not earlier). If you plan to come a bit before or leave a bit after the project you have to first talk to us about that.

THE VENUE

The Training Course will take place in **Brežice**, a small town situated in the Eastern part of Slovenia, close to the Croatian border. Our venue, MC Hostel Brežice, is located in the green heart of the city, just at a stone's throw from the city center.

Our training space will be a 275m² big multi-purpose hall with modern equipment and stage.

You can check the website of the venue in the following link: <http://www.mc-hostel.si/>

Living:

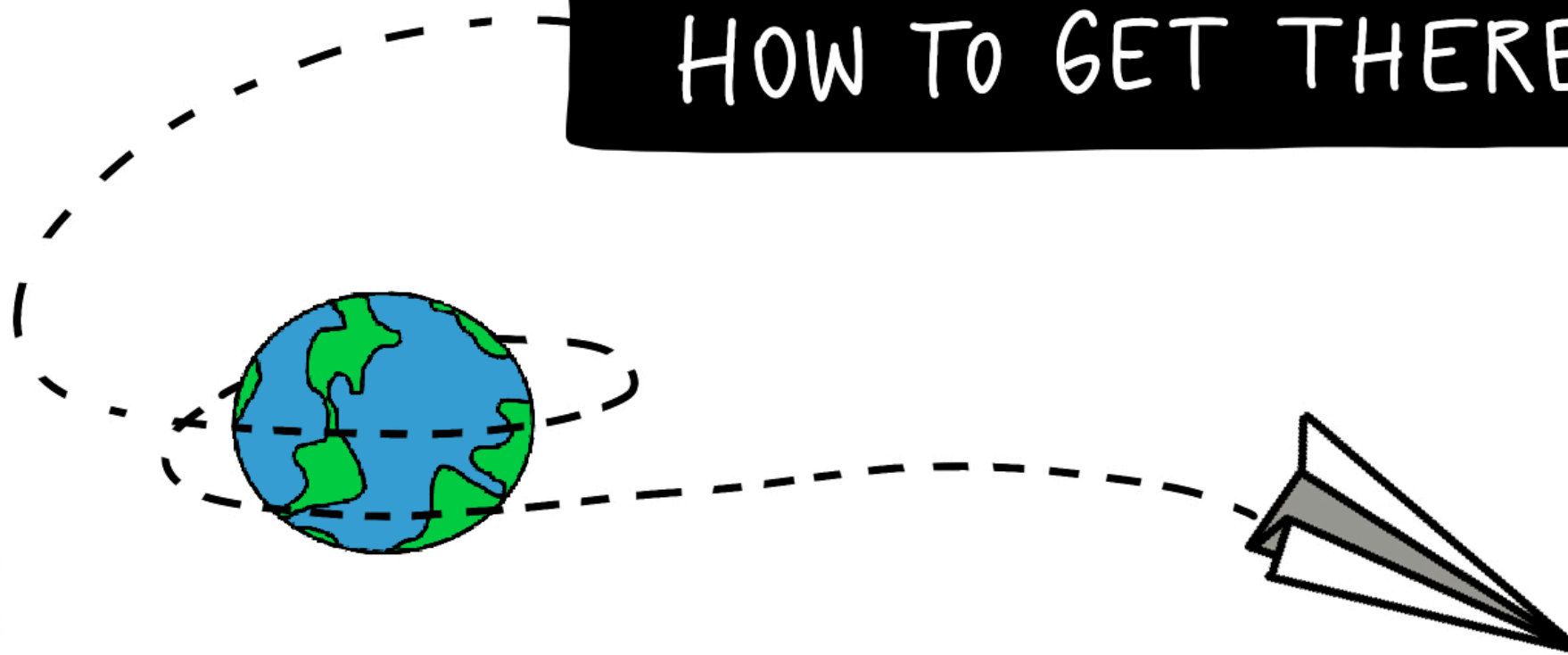
Participants will be accommodated in 6-bed rooms with WiFi access and it will be possible to use laundry service, shared kitchen and a cozy lounge area. The hostel has a sunny roof terrace overlooking the castle and the city park where participants can enjoy and relax. In the reception there is a tourist information point, which provides all the information on local attractions.

Eating:

We will have meals at the hostel starting with dinner on the 24th of October. On the 31st of October, breakfast is included as well.

You can make our tea breaks more interesting! Bring a food item from your village, city, family, community, region, or country to share with the others.,

HOW TO GET THERE?



By plane:

Flying to Ljubljana, Zagreb, Trieste, Venice, Treviso, Klagenfurt or Graz.

There are cheap flights from all over Europe to these airports. Check Ryanair, Volotea, Easyjet but you can also look other website like Momondo, Skyscanner, Opodo, Kayak or Expedia.

By bus or train

From your country or from the airport you can get to Brežice by taking a train via Zidani most.

Check the best prices and all the options on Rome2rio website.

Usually the cheapest buses are the Flixbus, Ouibus or Blablabus ones but you can find cheap Eurolines buses as well.

Do not hesitate to contact us at cirkuslabulle@gmail.com for more information about the transport options.

TRAVEL TIPS

To avoid misunderstandings and have an easy reimbursement process, we advise you to:

- Arrange all your travel in advance based on economy class tickets and plan the cheapest route possible to the project venue and back home.
- If possible travel together with participant from your country (come with the same plane, bus, train which will make our and your organization much easier).
- Taxi rides can only be refunded in special situations and have to be discussed in advance with us.
- Please note that car travel is not refundable.
- If you have any doubt about your travelling plans, please contact the coordinator before booking tickets.

Failure to participating in a minimum of 80% of the content sessions or inappropriate behaviour might resolve in reimbursement not being given to the participant or even withdrawal from the course with a notice provided to the sending organization.

PRACTICALITIES

HEALTH INSURANCE

It is mandatory to have a valid travel and medical insurance (European Health Insurance Card) during your travel. The host organization will not cover any personal health insurance for participants. Participants have to be aware that obtaining a health insurance in case of accident, serious illness (including permanent or temporary incapacity) and death (including repatriation) as well as the travel insurance (including damage or loss of luggage) is their own responsibility. We strongly recommend it. Please ask your sending coordinator if you have any doubt.

INTERCULTURAL SNACKS

We'll have the opportunity to discover food one another's cultures and national delicacies during multi-cultural coffee breaks. For this, you can bring some typical snacks or drinks from your country.

WHAT TO BRING

- Food item from your place to share with others during the coffee breaks
 - Toiletries
 - Warm clothes
- Earplugs (if you are sensitive to snoring)
 - Insurance card, passport
- Games to play in the evening, musical instruments if you like

HOW TO APPLY

Please fill in the application form: <https://forms.gle/U2TKa6cb4V3qp9vF8> Deadline for applications is: 10th of September. Please buy tickets latest till 24th of September and send us your arrival time.

For any questions related to the application, please contact us at cirkuslabulle@gmail.com



Erasmus+

