



**EUROPEAN
SOLIDARITY
CORPS**



**Solidarités
JEUNESSES**
RÊVER. CONSTRUIRE. TRANSFORMER

ESC Volunteering Teams Program 2022



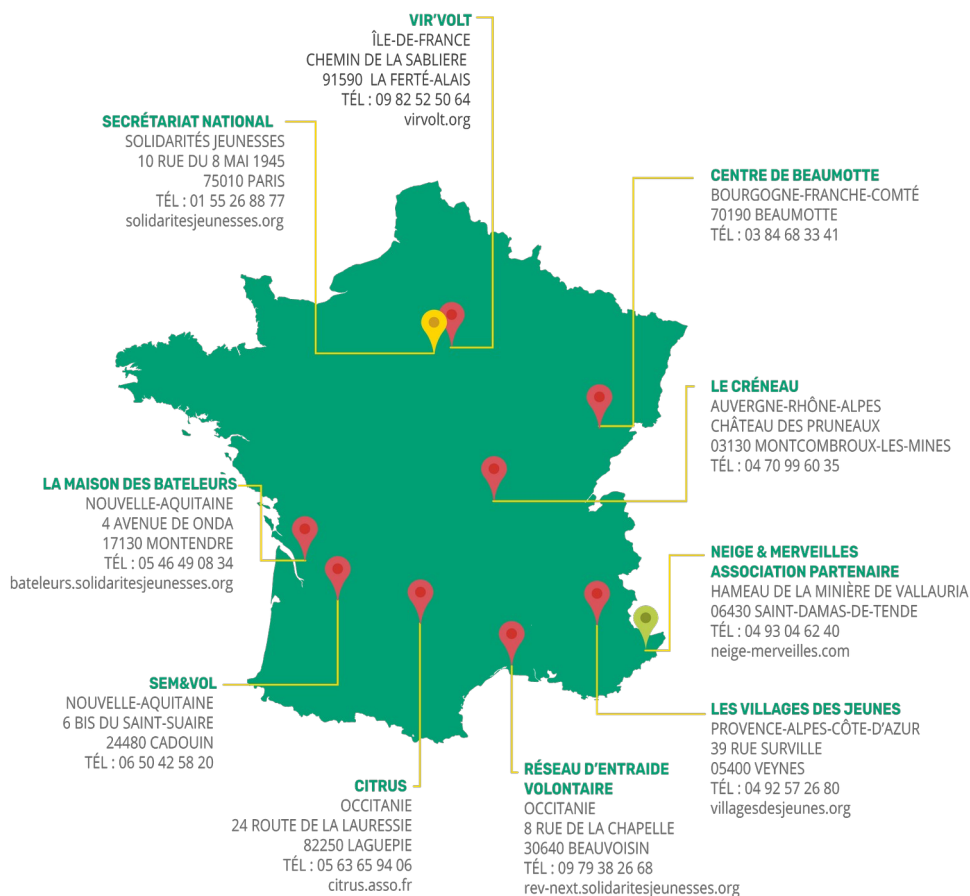
WHO ARE WE ?

Solidarités Jeunes (SJ) is a non-formal education national movement that values voluntary commitment, strong political will, and social solidarity as its core principles. Our course of action is influenced by our ideal vision of a society where progress is social. Respect for human beings and the environment is a fundamental and shared value, and the freedom to choose, to dream, and to resist is innate and encouraged by all.

Our activities are organised for all, regardless of gender, social and cultural background, or nationality. Since its creation, SJ participates in the construction and maintenance of peace by promoting intercultural and international social connections in France and abroad. SJ works through participative pedagogy which supports initiative and personal commitment, and combines the skills of all our volunteers, active members and staff.

Solidarités Jeunes is composed of a National Secretary based in Paris, eight regional offices, and one partner association. Our delegations host volunteers from France and from all around the world for short or long periods of time all year round. Furthermore, the partner association and the delegations host and provide assistance to young people with fewer opportunities, as part of our efforts towards inclusion and solidarity. All of our delegations and the partner association are situated in unique environments, such as castles, former campsites, isolated villages in the heart of the mountains, and former factories. These places have all been renovated thanks to the work of our short and long-term volunteers, workers and permanent staff.

SJ has been working in partnership with national and international networks (Cotravaux, CNAJEP, CCIVS, NVDA and Alliance) for several decades



CONTACTS

National Secretary Address	10, rue du 8 mai 1945 75010 Paris Tel.: +33 1 55 26 88 77 Emergency mobile phone: +33 6 99 94 84 04
Elodie Caille-Bonnot (Incoming Coordinator)	workcamp.in@solidaritesjeunesses.org
Lorette Vervoort (European Project Assistant)	projects@solidaritesjeunesses.org

These projects are supported by the program European Solidarity Corps for young people between 18 and 30 years. It is open to all the EU and partner neighboring countries that fit the ESC criteria. The participation to the ESC volunteering teams is subjects to several principles and conditions, presented on the ESC webpage:

https://europa.eu/youth/solidarity/mission_en

- *Volunteers do not have to pay any fee (no sending, nor participation fee) to attend the projects*
- *Volunteers need to enrol in the PASS, the European Solidarity Corps Portal ; SJ will organize their matching in the portal with the volunteering project;*
- *Volunteers will receive pocket money, calculated on basis of 6€/day, once they arrive on the projects*
- *Volunteers will receive a financial support for their travel, according to a maximum amount established in accordance with their travel distance and upon the presentation of original tickets*
- *Volunteers will have to complete a participation report, submitted online through the portal*

Region	Code	Name	Dates		Age	Type
CIT	SJ/ESC07	A medieval village	07/06/2022	27/06/2022	18-30	RENO PATR
CRE	SJ/ESC14	A forgotten heritage	27/06/2022	16/07/2022	18-30	RENO
GE	SJ/ESC26	Back to the playground	10/07/2022	30/07/2022	18-30	CONS
CIT	SJ/ESC27	Another brick in the wall	10/07/2022	31/07/2022	18-30	RENO CONS
AVJ	SJ/ESC31	Tracing the steps of the Duke of Lesdiguières	11/07/2022	01/08/2022	18-30	RENO
V'V	SJ/ESC32	Building an international and ecological village 1	10/07/2022	25/07/2022	18-30	CONS ENVI
CDB	SJ/ESC56	On the way to meetings	06/08/2022	27/08/2022	18-30	RENO SOCI
CDB	SJ/ESC57	St remix	06/08/2022	27/08/2022	18-30	RENO
AVJ	SJ/ESC62	Urban planning in Orpierre	08/08/2022	29/08/2022	18-30	RENO CONS
CRE	SJ/ESC70	A roof for the ice house	13/08/2022	28/08/2022	18-30	RENO
REV	SJ/ESC72	The witches' claw 1	30/08/2022	20/09/2022	18-30	ENVI

AVJ	SJ/ESC82	The real story behind Arzeliers castle	18/09/2022	02/10/2022	18-30	RENO CONS
V'V	SJ/ESC87	An ecological world	23/10/2022	07/11/2022	18-30	ENVI EDUC

SJ/ESC07 A MEDIEVAL VILLAGE 07/06-27/06 RENO/CONS 12 vols 18-30

Project : On the edge of the Bonant Valley and the Aveyron Gorges is the village of Milhars, an ancient mediaeval town whose stone streets lead to its castle. With its traditional architectural heritage, the village welcomes many cyclists and hikers. It is home to numerous cultural and social organisations, such as theatre, cafés, etc. You will have the opportunity to get to know the local population by participating in many summer activities that take place on the territory: night markets, votive celebrations, festivals, etc.

Work: You will participate in the renovation and upgrading of the mediaeval village: renovation of stairs, weeding and landscaping of vegetable terraces, cleaning and renovation of stone walls and the Milhars wash house. You will be supervised by craftspeople of the village.

Accommodation and food: You will be accommodated in a collective dormitory in the multipurpose room of the village. Mattresses and pillows will be provided, but you have to bring your own sleeping bag. A kitchen corner will be arranged, as well as access to the bathrooms. You will collectively prepare meals, self-managing within the group. Special attention will be given on food balance and local and seasonal products. Meals can be adapted to specific diets of participants (vegan, vegetarian).

Location: Milhars town, 60km from Montauban.

Leisure activities: In the heart of the Aveyron gorges, you can take advantage of the possibilities offered by the Tarn-et-Garonne: swimming in the Aveyron, visiting nearby mediaeval villages (Cordes-Sur-Ciel, Saint-Antonin-Noble-Val), hiking in the Bonant valley, etc. Accompanied by two pedagogical leaders, you will have the opportunity to meet the inhabitants and to discover Occitania through their eyes. In the evening and during the weekends, go to discover the territory, or let yourself be carried by your imagination to organise a barbecue, a karaoke evening, a folk ball, open to the population. Finally, you will organise a large international meal open to all, in order to share with locals and visitors passing by specialties of your home.

Closest train station : Lexos train station (Varen, 82330)

Closest airport: Toulouse

Time and directions to the meeting point : Lexos train station between 4 p.m. and 6 p.m. Campleaders will take you from the station to the accommodation building.

SDG : #11 Sustainable Cities and Communities

SJ/ESC14 A FORGOTTEN HERITAGE 27/06-16/07 RENO 12 vols 18-30

Project : What's the common point between a castle, winter and a giant hole in the floor ? The answer is in Le Créneau ! During this project, you will help us renovate the fixed ice house on the castle grounds. The ice collected from the water in winter was stored there to ensure the preservation of foodstuffs throughout the year. Help us enhance this small heritage, to give it acknowledgment and to highlight the skills acquired over the years! Your actions will be in accordance with the objectives 5 and 8 of sustainable development (UN) in favor of gender equality and decent work and economic growth.

Work : The work will consist of developing and enhancing the surroundings of the ice house before proceeding with its restoration.

- Enhance the masonry by clearing the vegetation (construction of a bamboo fence and relocation of part of the bamboo grove)
- Renovate and enhance the access stairs and entrance wall
- Level and renovate the low circular wall to lay a temporary floor
- Installing wooden pillars (and their foundations) to support the future roof
- Renovate the joints of the interior masonry

The work will take place in the morning, from 8:30AM to 1PM, with a break of 30 minutes around 11AM.

Accommodation and food : Participants will be hosted on Le Créneau's camping, in collective tents (5-6 per tents) with wooden floor and beds. WiFi is not available on site. Food will be provided and prepared by the participants in groups, in the collective kitchen of Le Créneau, with the support of the cooking staff.

Location : Montcombroux les Mines (45 kms away from Moulins)

Leisure activities : Weekends are planned collectively with the group leaders. If you want to discover the cities around, Vichy and Moulins are 45 kms away. If you'd rather have a nice walk in nature, the surroundings are perfect for hiking, landscape seeing, discovering local markets, swimming, and enjoying sports activities and games.

Closest train station : Moulins-sur-Allier (03000), 4 rue Philippe Thomas

Arrival : Let's meet at Moulins-sur-Allier train station, at 5pm !

SJ/ESC26 BACK TO THE PLAYGROUND 10/07-30/07 CONS 14 vols (including 2 locals) 18-30

Project: A collective and intercultural adventure in Alsace! Do you want to be part of it?

On the agenda : a workcamp useful to the rural community, technical apprenticeships, exchanges from local to global, co-prepared meals, the discovery of the Alsacian Vosges... And all that you will build together !

The inhabitants of Fouday are hosting an international workcamp for the first time and are eager to live this rich experience of sharing ! This workcamp lasts three weeks because that's what you need to carry out your experience fully : the time to get to know each other, to dream and to achieve our utopia together !

You will take part in the first workcamp to redevelop a convivial area around the Maison du Temps Libre, where concerts and events take place. Eventually, it will be a pleasant and useful meeting space for inhabitants of all ages. Your actions

will be in accordance with the objectives 4, 5, 11, 12, 16 and 17 of sustainable development (UN) in favor of quality education, gender equality, sustainable cities and communities, responsible consumption and production, peace, justice and effective institutions and partnerships for achieving the goals.

Work : Supported in the technical training by a motivated team of local volunteers, you will learn to rebuild a retaining wall, create barriers, tables, wooden benches... It will be mainly carpentry and masonry work.

At the same time, taking advantage of the intercultural dynamics, you will organise and co-animate awareness-raising activities on international solidarity and the fight against discrimination, aimed at young people.

No particular qualification is expected, only the desire to do something together! How many hours of work per day ?

Accommodation : You will be accommodated in the village school, specially fitted out for you and located 400 meters from the workplace. You will sleep in 2 different rooms. Kitchen, toilets, washbasins, showers on site. Please bring a sleeping bag, sheets and pillow.

Food is provided and included in the budget of the workcamp. You will take it in turns to prepare meals and local and/or organic purchases will be favored.

Location : Rich in history (67130), Fouday is a village of 350 inhabitants, situated in the Bruche Valley, at the foot of the Champ du Feu Massif (430m altitude). At the confluence of the Chirgoutte, it is an environment of forests and pastures. We are 50 km west of Strasbourg.

Leisure activities : walking, horse riding, festivals, markets, museums, etc... It is up to us to organise together the discovery activities that suit us : the possibilities are numerous!

We will also be actively involved in the festivities of the 14th of July, the French (inter)bank holidays ;)

Closest train station : Fouday train station

Arrival : Let's meet between 4pm and 7pm, at the station in Fouday (67130)

SJ/ESC27 ANOTHER BRICK IN THE WALL 10/07-31/07 RENO/CONS 15 vols 18-30

Project: Since 2002, the Citrus association has been organising international workcamps in the Tarn-et-Garonne region. Each year, dozens of volunteers from all over the world take part in a technical work camp of public interest, in the heart of a village. This year, it is in the village of Genebrières, in the department of the Tarn-et-Garonne, that you will participate in bringing interculturality, sharing and meeting to life. Your actions will be in accordance with the objectives 3 and 4 of sustainable development (UN) in favor of good health and well-being and of quality education.

Work: You will participate in the renovation and upgrading of the surrounding walls of the town hall, in the heart of the village. You will discover the typical architecture of Occitania, with its red bricks that turn orange when the sun sets. Supervised by two village employees, you will learn how to join and lay bricks, using traditional materials (lime, sand). You will work approximately 6 hours per day 5 days a week (around 30hours per week).

Accommodation and food: You will sleep in a dormitory in a community hall, really close to the work site. Mattresses will be provided, you only need to bring your sleeping bag and a pillow. A shower and toilets are on site, and a kitchen

and a living room will be available nearby. There will be no washing machine available. Every day, a team of volunteers will cook meals for the whole group, according to menus that you will have chosen collectively. Special attention will be paid to seasonal and local food. Some arrangements for special diets can be made with the group leaders.

Location : Genebrières, 15km away from Montauban.

Leisure activities : In the heart of the Tarn-et-Garonne, you can take advantage of the possibilities of the region: swimming in the Aveyron, visiting medieval villages (Bruniquel, Penne, etc.), hiking, etc. Discover the city of Montauban, whose bricks glow in the evening light. Accompanied by two educational animators, you will meet the inhabitants and share this experience with them! In the evenings and at weekends, let your imagination run wild and organise a barbecue, a karaoke night, a folk dance, etc. Finally, you will organise a big international meal, open to all, in order to share specialities from your culture with the inhabitants and visitors.

Closest train station : Montauban Ville-Bourbon (82000)

Closest airport : Toulouse-Blagnac (31000)

Arrival: At 6PM, campleaders will pick you up at Montauban Ville-Bourbon train station.

SJ/ESC31 TRACING THE STEPS OF THE DUKE OF LESDIGUIERES 11/07-01/08 RENO 11 vols 18-30

Project: Do you want to participate in the protection of a historic site in the heart of idyllic mountain landscapes? Join us and come discover the castle of Lesdiguières and its natural setting at an altitude of 1140 meters!

The Duke of Lesdiguières, the last Constable of France, is a military figure known for his participation in the Wars of Religion and for his involvement in the construction and development of roads, bridges and dikes against flooding in the region. He had this castle built between 1571 and 1580, which was abandoned after his death. It was looted during the French Revolution. The castle is listed in the supplementary inventory of Historic Monuments in 1978. In 2000, the "Château de Lesdiguières" association was created with the aim of safeguarding the historical, architectural and cultural memory of the building. Since 2010, the various works that we have been organizing on this site are aimed at securing and reinforcing the existing walls, but also at enhancing its value.

Work: Do you want to learn ancient masonry techniques and to register your action in accordance with the objective 12 of sustainable development (UN) in favor of sustainable consumption and production? How to use ancient and ecological materials?

Since 2018, we have been working on the reinforcement of the masonry of an escarpment wall (defense wall). With time and bad weather, this wall has suffered some damage and its stones are coming loose. With the help of the technical supervisor, we will work with old techniques and materials (such as lime). At certain times, we will work at height, using scaffolding. We will work around 30 hours per week.

Accommodation and food: In tents at the "La Pra" campsite in Saint Firmin, located at the entrance to the Valgaudemar valley. On the campsite, we will spend a quiet stay in a mountainous and exceptional green setting. We will have access to facilities such as toilets, barbecue, petanque ground, WIFI. We will set up a large kitchen tent in order to prepare our meals (vegetarian, vegan and other specific diets possible). The preparation of the meals is done in turn, so

that we can taste several specialties! Here, we pay attention to what we eat, to reduce our impact on the planet, we try to eat a maximum of local products and we eat meat twice a week. Collective life is organized together: organization of menus, shopping, activities, etc. The lunch will be cold as it will be taken to the construction site. Bring a mattress, a good sleeping bag (the nights can be cool) and a pillow (to be adapted to your needs).

Location: The workcamp is located in the village of Glaizil and the campsite in the village of St Firmin (about 20 min by car). In the village of Saint Firmin there are some small shops and we are about 15 km from Saint Bonnet en Champsaur and 30 km from Gap. Once or twice a week, we organize our vehicles with some shopping outings!

Leisure activities: In the heart of the Ecrins National Park, between the Valgaudemar, Champsaur and Dévoluy valleys. Your eyes will never cease to be amazed by this exceptional environment! We can discover the pleasures of hiking in the mountains, its rivers and lakes, farmers' and producers' markets, and festive evenings organized in the surrounding villages (depending on the programme). As a group, we will decide which activities and discovery outings we wish to organize (subject to distance).

Closest train station: Gap (05000). We will meet you at the station between 4pm and 6pm.

Closest airports: Marseille or Lyon.

SJ/ESC32 BUILDING AN INTERNATIONAL AND ECOLOGICAL VILLAGE 1 10/07-25/07 CONS/ENVI 16 vols 18-30

Project: Vir'Volt stands for InteRnational VolunTeer Village (in French). Since 10 years, the organisation is located right in the middle of nature, near a regional park. Hosting youth from all around the world, learning how to understand and appreciate differences. To plan and act together to protect the environment. To create a positive impact on the surrounding environment and people living there or simply passing by. Here lie our goals for this future village, which each year, is built thanks to youths who come and contribute, with solidarity as their driving force. Vir'Volt also aims to become fully eco friendly and sustainable which is reflected in our campsite ; yurts and teepees as rooms, permaculture farming and gardening, water saving projects, reducing and reusing waste. This small village will become great without sacrificing or damaging the surrounding environment whilst always searching better and more eco friendly ways of living. Your action will be in accordance with the objectives 12 and 13 of sustainable development (UN) in favor of a responsible consumption and production and of climate action.

Work: During this workcamp, you will be in various work projects on-site as well as in the local town alongside local and international volunteers.

- 2 New yurts have been installed on-site to be able to host more people! You will help in the installation of the yurts. (Simple woodworking)
- In La Ferté-Alais, the former swimming pool is becoming a dedicated youth space. You will help in the refurbishment of the interior walls. (Painting and simple masonry)
- Near our village (La Ferté-Alais), an ecological museum is being built. Ancient and traditional farming tools are in need of preserving to be exposed and teach future generations how land used to be cultivated using only human energy. (Renovation)

- Inside the workcamp, we are creating small areas with many purposes. Reading, talking, relaxing, planting flowers... With your involvement, you can leave a meaningful and traceable mark by building furniture using recycled wood pallets. (Simple woodworking, construction)
You will work in the mornings, afternoons will be reserved for leisure activities.

Accommodation and food: You will sleep in collective tents (yurts, tepees) on the campsite of the association. Please bring a sleeping bag with you. The campsite has separate bathrooms and showers, as well as a kitchen place. Food will be provided and cooked by the volunteers in turns.

Location: La Ferté Alais is approximately 50km south of Paris, in the Essonne region.

Leisure activities: You will have the chance to enjoy the association's campsite and to discover the cultural and natural heritage of the region which is part of a natural park. You will also help organise some activities in order to meet and socialize with local young people. Other leisure activities will be organised collectively depending on the wishes of the group and the available budget.

Closest train station: La Ferté Alais RER station.

Closest airports: Paris Roissy Charles de Gaulle, Paris Orly and Paris Beauvais.

Time and directions to the meeting point: La Ferté-Alais train station, between 2pm and 4pm

Observations: This project should not be seen as a sightseeing trip to Paris. If you wish to visit Paris, you should do so before arriving or after the dates of the workcamp.

SJ/ESC56 ON THE WAY TO MEETINGS 06/08-27/08 RENO/SOCI 10 vols 18-30

Project: Lying on the edge of a forest, the site of *la Madone* attracts many hikers drawing their curiosity. Based on community developmental work, this project intends to facilitate an exchange between the local community and international volunteers. In response to the UN goal of "Sustainable cities and communities", the work camp will be focused on creating common intercultural space and exchange with the local community, exploring new ways of thinking, and acting, sharing experiences, alternative living, and taking part in collective life. There will be many occasions to promote solidarity. All international workcamp memories are unique, so come to *Dampvalley-lès-Colombe* and make your own !

Work: A dozen stone constructions surround a tall statue, of about 10m. To bring new life to the place you will renovate walls and structures, around 6 hours a day. You will learn techniques of traditional masonry (wall-building) with mortar. You will evolve as a team with the help of a technical supervisor, sharing all tasks associated with collective life such as cooking, cleaning, after work activities etc.

Accommodation and food: You will live in a municipal center set aside for your group and the football pitch will also be at your disposition. The place is equipped with a kitchen and field beds will be provided for you. Bring your own bedding, blankets or sleeping bags. Showers can be taken in the homes of the locals. Alternatively you can prepare meals outdoors and use long drop toilets.

Accompanied by the camp leaders, you will make the menu and prepare the meals, in turn. Vegetarian options are available. You will oftentimes share meals with the villagers giving you the opportunity to discover the local gastronomy and what makes it unique.

Location: The commune of *Dampvalley-lès-Colombe*, is situated 10 km from Vesoul (70000) in the department of *Haute-Saône*. The workcamp is located approx. 15 minutes on foot from the accommodation.

Leisure activities: May it be during the afternoons or weekends; your group will initiate and organise the activities. The ideal programme will account for the wishes of everybody and the financial side of things.

In *Dampvalley-lès-Colombe* you can enjoy the many local amenities such as the nautical centre and the football pitch. You can also rely on the support of the villagers for organisation, as they will be delighted to engage with you and to give advice on how to best discover the local environment and enjoy your stay.

Closest train station: The closest train station is in *Vesoul* (70000).

Closest airports: Paris and Basel in Switzerland.

Time and directions to the meeting point: A meeting point will be established to facilitate your arrival. This is planned towards the end of the day between 4 pm and 6 pm. Campleaders will drive you from the train station to the village.

SJ/ESC57 ST REMIX 06/08-27/08 RENO 12 vols 18-30

Project: This work camp allows its participants to expand their knowledge and abilities, in intercultural exchanges and construction. In response to the UN goal of "Sustainable cities and communities", the work camp will be focused on creating common intercultural space and exchange with the local community, exploring new ways of thinking, and acting, sharing experiences, living alternatively and taking part in collective life. There will be many occasions to promote solidarity. All international workcamp memories are unique, so come to *Saint-Rémy-en-Comté* and make your own!

Work: After your arrival, you will continue renovations started by the association a couple years ago. You will learn to cut stones and traditional masonry (wall building) and renew the ruins of a medieval castle. The work (around 6 hours a day) will be organised in teams and you will also be in charge of all chores such as cooking, cleaning etc.

Accommodation and food: You will live in a building set aside for your group. The place is equipped with a kitchen and field beds will be provided for you. Bring your own bedding, blankets or sleeping bags. Showers can be taken in the homes of the locals.

Accompanied by the camp leaders, you will make the menu and prepare the meals, in turn. Feel free to initiate collective meals with the other residents. Vegetarian options are available. You will oftentimes share meals with the villagers giving you the opportunity to discover the local gastronomy and what makes it unique.

Location: The commune of *Saint-Rémy-en Comté* is situated 30 km from Vesoul in the department of *Haute-Saône*. The workplace and the accommodation lie very close to each other, and the distance can easily be covered on foot.

Leisure activities: May it be during the afternoons or weekends; your group will initiate and organise the activities. The ideal programme will account for the wishes of everybody and the financial side of things. It might include exploring the nature around the village, sports, games and touristic sites that could awaken your curiosity.

With its medieval ambiance Saint-Rémy-en-Comté and its surroundings provide many opportunities to experience the region's unique flair together. You can also rely on the support of the villagers for organisation, as they will be delighted to engage with you and to give advice on how to best discover the local environment and enjoy your stay.

Closest train station: Vesoul (70000).

Closest airports: Paris and Basel in Switzerland.

Time and directions to the meeting point: A meeting point will be established to facilitate your arrival. This is planned towards the end of the day between 4 pm and 6 pm. Campleaders will take you from the station to the village.

SJ/ESC62 URBAN PLANNING IN ORPIERRE 08/08-29/08 RENO/CONS 12 vols 18+

Project: Come and have fun in this village of Oprieire known worldwide for its climbing site. This year, the town hall of Oprieire and the association Les Villages des Jeunes and the Parc Régional des Barronies would like to start a campaign to preserve and enhance the ancient built heritage of the village. For the summer of 2022, the town hall would like us to rehabilitate a transverse passage between two streets of the village arranged by a staircase partly concreted. Today, this passage is closed for the safety of the residents. The purpose of the project at the end of the construction site is to reinstall pedestrian access to this passage and to make it attractive by installing a dry stone planter that will be able to accommodate ornamental plants. This project will also be part of a partnership with the UAC (Union APARE-CME) and its construction site in Pernes-Les-Fontaines. We plan to visit the group for a weekend and thus meet them, visit their workcamp and spend some quality time together. Conversely, the group from the Pernes-Les-Fontaines workcamp will come to visit you, the occasion for a giant international meal...

Work: Do you want to learn ancient masonry techniques and register your action in accordance with the objective 12 of sustainable development (UN) in favor of sustainable consumption and production ? How to use ancient and ecological materials ? You will have to start the work by clearing the brush from the site to allow a better visual and thus clear the stones of a low wall adjacent to the staircase to rebuild it according to the dry stone construction technique. You will then restore the steps of the staircase. On the lower part of this passage, the town hall wishes that we intervene on a low wall that needs to be restored and thus to be used as base for the construction of a planter which would allow at the same time an aesthetic installation as well as a materialization of the direction of use of the passage. You will have to build low walls according to the dry stone technique (without mortar) and be creative to make the place as pleasant as possible. The work represents 30 hours in a week. Evenings and weekends are free for activities you choose to organize together. Accommodation and food: You will be accommodated in individual tents at the campsite Les Catoyes in the town of Sainte Colombe, 4km away (the journeys between the site and the campsite will be made by mini-bus). You will take part in turn in the different missions of daily life according to a plan that you will define with the animation team and that will accompany you to realize them. These missions are to make sure that the camp is clean, to elaborate the menus and to do the shopping (local products are preferred), to prepare the meals for the group (vegetarian, vegan and other specific diets possible), to organize the leisure activities and the outings. The lunch will be cold because it will be taken

on the site. Bring a mattress, a good comforter (the nights can be cold) and a pillow (to be adapted according to your needs).

Location: The village of Orpierre is located in the south of the Hautes-Alpes department, 14km west of Laragne Montéglin.

Leisure activities: You will take advantage of the natural environment of Orpierre and in particular of its 500 climbing routes which allow all beginners as well as seasoned climbers to enjoy themselves. You will be able to take advantage of the numerous bathing places very easily accessible, like the gorges of the Méouge or Riou. You will have the leisure to hike in the surrounding massifs and will be able to initiate you to many mountain sports (viaferrata, climbing, etc.). As a group, you will decide on the activities and discovery outings you wish to set up (subject to distance).

Closest train station: You can arrive by train from Grenoble or Marseille directly at the Laragne- Montéglin station. Carpooling is also possible to Laragne because the city is on the road between Grenoble and Marseille. The meeting times at the Laragne train station will be communicated to you on the route map (no times available at this time).

SJ/ESC70 A ROOF FOR THE ICE HOUSE 13/08-28/08 RENO 12 vols 18-30

Project: What's the common point between a castle, winter and a giant hole in the floor ? The answer is in Le Créneau ! During this project, you will help us renovate the fixed ice house on the castle grounds. The ice collected from the water in winter was stored there to ensure the preservation of foodstuffs throughout the year.

Help us enhance this small heritage, to give it acknowledgment and to highlight the skills acquired over the years!

Currently without any roof protection, the ice house must be waterproofed to protect it from bad weather. Your actions will be in accordance with the objectives 5 and 8 of sustainable development (UN) in favor of gender equality and decent work and economic growth.

Work: This project is a continuation of the first one carried out in July and is in advance of another one. It will consist of protecting the structure from bad weather and laying a temporary floor in preparation for the final restoration of the roof using the methods of the time.

In detail, this work, centered around carpentry, will consist of

- the installation of a floor structure based on the existing low wall
- laying a temporary floor on this structure
- the construction of a framework to protect the structure
- the installation of a temporary roof over this structure
- the construction of a protective barrier around the ice house

The work will take place between 8:30AM and 1PM and between 2:30PM and 4:30PM, with a break of 30 minutes around 11AM.

Accommodation and food: Participants will be hosted on Le Créneau's camping, in collective tents with wooden floors and beds. WiFi is not available on site. Food will be provided and prepared by the participants in groups, with the support of the cooking staff.

Location: Montcombroux les Mines (45 kms away from Moulins)

Leisure activities: Weekends are planned collectively with the group leaders. If you want to discover the cities around, Vichy and Moulins are 45 kms away. If you'd rather have a nice walk in nature, the surroundings are perfect for hiking, landscape seeing, discovering local markets, swimming, and enjoying sports activities and games.

Closest train station : Moulins-sur-Allier (03000), 4 rue Philippe Thomas

Arrival : Let's meet at Moulins-sur-Allier train station, at 5PM !

SJ/ESC72 THE WITCHES' CLAWS 1 30/08-20/09 (to be confirmed) ENVI 12 vols 18-30

Project: This international camp is organized in partnership with the Syndicate mixed Rivage and the town of Barcarès, on the edge of the Salses Leucate pond, in a protected wetland, renowned for its varied biodiversity. The partnership between the Syndicat mixte Rivage and the REV has existed for several years. The syndicate collaborates regularly with the REV, on the organization of international worksites or other occasional events. The two structures are used to working together, and find each other both in terms of their values and their ambitions.

This year's project will aim, in addition to removing invasive species (witches' claw, yucca, prickly pears, agaves, etc.), to participate in implementing measures for the protection and enhancement of existing biodiversity on the site (e.g. trail layout). Since the work is linked to weather conditions, the tasks are generally defined at the start of the project. Your action will be in accordance with the objectives 14 and 15 of sustainable development (UN) in favor of the protection of fauna and flora (aquatic and terrestrial).

Work: This site will allow you to carry out several activities: opening up environments (cutting down trees), delimiting the protected area of the area frequented by kite surfers for example (laying wooden barriers), uprooting invasive species in order to allow endemic species (flora or fauna) to be able to reproduce. The aim of the project is to preserve the surroundings of the pond, whether by managing attendance or managing plants. 25h/week

Accommodation and food: You will be accommodated in a gîte made available by the town hall. This place includes dormitories, toilets and a kitchen. Meals will be provided and prepared in turn by participants.

Location: Between the Mediterranean Sea and the pond of Salses Leucate, near Perpignan and the Pyrenees.

Leisure activities: As the site will be held in a protected area, the majority of leisure activities will consist of discovering the surrounding nature (fauna and flora), but also discovering the culinary heritage. Transport will also be made available to organize discovery outings and leisure activities.

Closest Train Station: Leucate la Franqui station between 1 p.m. and 6 p.m.

Closest Airport: Montpellier

Project: At the gates of the provençale Baronnies, the site of Arzeliers lies perched on a small mountain where one can marvel at a beautiful view of the Durance valley. This former village that today is in ruins is the birthplace of the Laragne commune. There, we can still find the remnants of a chapel as well as the ruins of several homes. For some years now, the commune of Laragne has mobilized the ruins of the Arzeliers castle, a relic of the rich past of these communities, back to life by upgrading and maintaining it. For this purpose, international workcamps of young volunteers have been organized since 2013.

Work: Do you want to learn ancient masonry techniques and to register your action in accordance with the objective 12 of sustainable development (UN) in favor of sustainable consumption and production? How to use ancient and ecological materials?

This year, we will continue to work on protecting former homes in close proximity to the castle. With the aim of preserving this heritage and its remains, we will use the same materials used at the time, namely, plaster. We will collect the gypsum on site, and cook it (thanks to an oven built on location), in order to reuse it in the masonry. All of this will be accomplished with the help of a technical supervisor who will be there to share their knowledge! Warning, this will tone up your arms! You'll work for 30h a week, you will get there by vehicle. We will use a scaffold at times for work at heights. Evenings and weekends are free for activities that you will choose and organize together.

Accommodation and food: We'll be living under tents on the « Montéglin » camping in Laragne, a small town steeped in history and typically provençal. On the campgrounds, we have access to amenities like sanitary facilities, a barbecue, a pool, a bocce ball court, a bar, a restaurant, and WIFI. We will install a large kitchen tent in order to prepare our meals. We'll take turns cooking, that way we'll be able to taste a number of different specialties ! Here, we pay attention to what we eat, and to reduce our impact on the planet, we try to eat a maximum of local products and we limit eating meat to twice a week. Community life will be organized together: organization of menus (vegetarian, vegan and other specific diets possible), grocery shopping, activities, etc. The lunch will be cold as it will be taken to the construction site. Bring a mattress, a good sleeping bag (the nights can be cool) and a pillow (to be adapted to your needs).

Location: The small town of Laragne is a welcoming town with all kinds of shops (10km from Sisteron and 40km from Gap).

Leisure activities: We will be in an exceptional location to discover the joys of hiking among the mountains, its rivers, its lakes, the farmers markets, and festive events organized in the surrounding villages (depending on programming). As a group, we'll decide the activities and outings that we want to set up (subject to distance).

Closest train station: Laragne Montéglin (05300)

You can arrive by train from Grenoble or Marseille directly at the Laragne Montéglin station. Carpooling is also possible because Laragne is on the road between Grenoble and Marseille. The meeting times at the Laragne train station will be communicated to you on the route map (no times available at this time).

Closest airports: Lyon or Marseille.

SJ/ESC87 AN ECOLOGICAL WORLD 23/10-07/11 ENVI/EDU 16 vols 18-30

Project: The city of Vaires Sur Marne, a stone's throw from Paris, continues its path towards a more ecological and environmentally friendly world. In this project, you will be able to help develop eco practices in the Bois de Vaires, and carry out environmental education activities for the benefit of future generations!

Work: Classified "Natura 2000", the Bois de Vaires has a fitness trail, a playground, picnic tables, benches and land dedicated to sports practices, an arboretum made up of 29 topics. During this project, you will be involved in the construction of ecological modules, which help to promote the biodiversity of the wood (cleaning, pruning, construction of insect shelters, birdhouses, etc.). Accompanied by the animators of the site, you will build environmental education activities for the benefit of the children of the city. Games, debates, quizzes, come and teach younger generations to understand and act on their environment!

Accommodation and food: You will be accommodated in the city gymnasium, two single-sex sanitary blocks available (showers and toilets). The construction site can be reached on foot 15 minutes from the town center of the village. The meals are prepared collectively by all the young people and the team in turn! For obvious ecological reasons, the purchase of local organic products is prioritized, meat consumption is limited. Vegetarian or vegan cooking for those who wish is possible.

Leisure: Accompanied by the animation teams, you can discover the banks of the Marne, go canoeing along the marne, attend local cinema screenings, go hiking, and visit Paris during the weekends .

Location: Vaires Sur Marne, 77360, 30 min from Paris

Closest train station: Vaires Sur Marne, train "P". Take the "P" train from Paris Gare de l'est Direction "Vaires-Torcy". Get off at Vaires

Closest airports: Paris

Meeting point: Meet at the Vaires sur Marne RER station on Monday September 24, 2022, between 3 and 6 p.m.

SDGs: 11: Sustainable cities and communities, 12: Sustainable consumption and production, 13: Climate protection, 15: Life terrestrial